



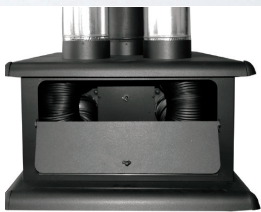
Warmth from the **heart** of  
J.A. ROBY

# ROBY 2500 CUISINIERE HIGH EFFICIENCY

**1.3 g/h**  
**EFFICIENCY**  
**78.6%**

## TEST STANDARDS

CSA B415.1  
ULC S627  
UL 1482



**PLUS**

## WHAT IS THE PLUS

The **PLUS** was designed to be used with the **ROBY 2500** to enhance comfort in the home. It's about a unique system of recovery heat that increase the calorific value. Using one or two blowers (460 to 920 CFM), the **PLUS** distributes heat more efficiently and increases stove efficiency by 40%.



**ROBY 2500**



SMALL DECORATIVE CHROME-PLATED TOP WITH MIRROR, OPTIONAL



Model shown ROBY2500CUILX

**TREAT YOURSELF WITH PEACE OF MIND WITH THIS DEVICE PROVIDING 95,000 BTU AND EQUIPPED WITH A FOOD WARMER AND CAST IRON COOKING PLATE. MOBILE HOME APPROVED.**

### ROBY 2500

Optimum efficiency	78.6%
Recommended surface (sq. ft)	1,000 - 2,500
Exterior dimensions (without food warmer)	27-3/4" W X 33-1/8" H X 30-1/2" D
Interior dimensions	19" W X 10-7/8" H X 20" D
Door opening	15-3/4" W X 10-1/4" H
Evacuation pipe	6"
Floor to ceiling clearance	84"
Average capacity (dry cordwood)	95,000 BTU
Average capacity (test wood)	53,935 BTU/h
Weight	380 lbs
Log length	19"
Back clearance	12"
Lateral and corner clearance	18"
Firebox capacity	2.87 ft <sup>3</sup>
Color	Metallic black

### ROBY 2500 CUISINIERE

Optimum efficiency	88%
Recommended surface (sq. ft)	1,000 - 2,500
Exterior dimensions (with food warmer)	27-3/4" W X 54" H X 30-1/2" D
Interior dimensions	19" W X 10-7/8" H X 20" D
Door opening	15-3/4" W X 10-1/4" H
Evacuation pipe	6"
Floor to ceiling clearance	84"
Average capacity (dry cordwood)	95,000 BTU
Average capacity (test wood)	53,935 BTU/h
Weight	440 lbs
Log length	19"
Back clearance	12"
Lateral and corner clearance	18"
Firebox capacity	2.87 ft <sup>3</sup>
Color	Metallic black
Black enameled cast iron cooking plate included with ROBY 2500 CUISINIERE	

#### ROBY 2500 OPTIONS

- Chrome-plated cast iron legs
- Chrome-plated trim door
- Black enameled cast iron cooking plate: PLAQUECUID
- 2 blowers (150 CFM) and 1 thermodisc kit (VENT)
- Heat accumulator includes blower 460 CFM and thermodisc (PLUS)
- Additional 460 CFM for use with PLUS option (VENT460T+)
- MOBILE HOME APPROVED (with option outdoor air intake TCPAE, to be installed in plant)

#### ROBY 2500 CUISINIERE OPTIONS

- Chrome-plated cast iron legs
- Chrome-plated trim door
- Small decorative chrome-plated top with mirror (TDDCHP)
- 2 blowers (150 CFM) and 1 thermodisc kit (VENT)
- MOBILE HOME APPROVED (with option outdoor air intake TCPAE, to be installed in plant)

#### FOOD WARMER

24-1/2" W X 10" H X 12" D  
Door opening:  
17-1/2" W X 6" H



MADE IN  
QUEBEC / CANADA

**LIMITED LIFETIME WARRANTY**

DISTRIBUTED BY: